

Consultants in Construction and Property
trust us to be festive

Welcome To Our Advent Newsletter 2006

We reflect on a busy and successful year here at CMPB with news of key projects at Ladywell Convent, Caterham, Sevenoaks and Oakham Schools and we celebrate the opening of the latest project at Thomas More School.

Talent abounds in CMPB both in and out of professional lives and we take a look at what project manager Russell Blaber and his band 'Helium Soul' get up to when Russell isn't busy running construction projects. Our Senior Surveyor, Mike Chapman has a very talented son who has danced his way to national fame and we report on his successes which we are pleased to have sponsored.

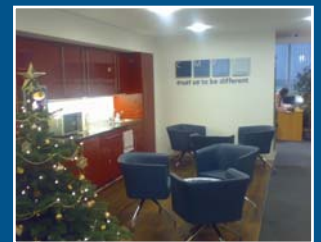
Clients and visitors to our London office since July will have noticed our newly refurbished facilities and in a completely unrelated article, our Senior Health & Safety consultant, Andrew Avis talks about sick building syndrome!

We wish all our clients, fellow consultants and colleagues a very Happy Christmas and a prosperous New Year!

Our London Office gets a Facelift!

Our London office has recently undergone a huge face lift with interior designers The odb Group being brought in to create a sleek, modern and exciting environment for our staff and Clients.

The refurbishment reflects our growth and hopes for the future. We now feel we are able to welcome our Clients in an environment which truly reflects our company as a whole. The improvements include a new breakout space, an extended main meeting room and a second meeting room, as well as a more flexible open plan office layout.



Staff News

We are delighted to have recently welcomed David Woollard ACA as the Practice's new Financial Controller.

Based on our London Office, David is a chartered accountant who has over 25 years of finance experience and good experience of the construction industry having worked with a number of firms including Morgan Lovell. Graham Harvey-Browne writes 'David is a key appointment for CMPB to provide a sound financial and management base during a sustained period of growth.' David will join the practice management team currently headed up by Graham Harvey-Browne and Simon Worthy. He is supported by Eudora Benn-Short to augment the existing accounts team.



David Woollard

Our Building Surveyors have welcomed Robert South at our Guildford office as a new recruit to support their growing workload. Andrew Avis and Peter Budd joined us as Senior Planning Supervisors based at our London and Guildford offices respectively.

We were sad to say farewell to Sheldon Morris (Associate QS) from our Guildford office, at the end of November. He has moved to a senior position involved with Olympic Procurement. We wish Sheldon well and look forward to keeping in touch – even of continuing to work with him!

On Show at The Thames Gateway Forum

On the 22nd & 23rd November some of our CMPB team attended the Thames Gateway Forum 06 at the Excel Exhibition Centre.



The award-winning Thames Gateway Forum is the annual meeting place for all those involved in the regeneration of The Thames Gateway and Olympic region to the east of London. It was a key event for us to attend due to our previous and ongoing work in the gateway and proved to create an excellent channel of communication between key players involved in the Thames Gateway Project.



Mark Sowter of Tesco (left) with Stuart Strachan (Partner) visiting the CM Parker Browne stand at the Thames Gateway Forum

With high profile speakers such as Ruth Kelly, David Higgins and Ken Livingstone it attracted a host of market leaders within the property and construction industry.

Advice available from our In House Doctor on Sick Building Syndrome

Our recent recruit Andrew Avis who joined CMPB as a planning supervisor back in June this year demonstrated the depth of his knowledge when he was approached by Building & Engineer magazine to write an article on Sick Building Syndrome (SBS).

Andrew who is a Chartered Member of the Institute of Safety and Health (CMIOSH) took an interest in SBS over 10 years ago out of a natural curiosity for people's welfare. Since then he has studied and helped many companies understand and overcome problems with SBS and is now recognised as an expert in this field.



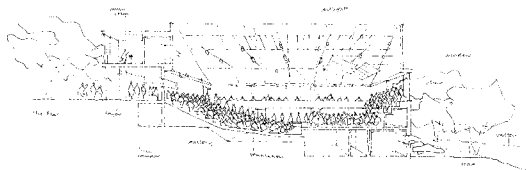
As Andrew explains in the article, what is not often realised is that SBS is not always a symptom of the built environment but can be a by-product of many things including long working hours, positioning of equipment, light and poor management. SBS costs businesses millions of pounds each year when in fact in the majority of cases small improvements can help to eliminate the problem. Since the article was published

there has been interest from a number of other publications so look out for our soon to be famous SBS expert!

If you have a case of suspected sick building syndrome, do contact Andrew Avis at our London office.

Harmonising Service To Oakham and Sevenoaks Schools: Concert Hall and Performing Arts Buildings Abound!

CM Parker Browne have been appointed project manager and planning supervisor to Sevenoaks School for their proposed new performing arts building.



Working with the school's other consultants, Tim Ronalds Architects, Bucknall Austin (the cost manager), Carr & Angier (Theatre Consultants), Arup Acoustics (Acoustician) Max Fordham (Services Engineers) and Pryce & Myers (Structural Engineers) we are delighted to be back working with an old client of ours once more. Sevenoaks School plan to construct a brand new performing arts building and link it to the school's existing theatre building. With an all-in project budget of circa £13 million, the new facility is due to be completed by the end of 2009.

Performing Arts buildings must be the in-fashion thing at present; in the past year we have prepared feasibility costings for such facilities at Dover College and at Sherbourne School for Boys. At Oakham School, we have been appointed as Quantity Surveyor, Project Manager and Planning Supervisor for their proposed Concert Hall and Rehearsal Studios. We managed the process of selecting the architect and design team which saw Burrell Foley Fischer appointed at the end of October, 2006. The design team include Anne Minors Performance Consultants, Jane Wernick Associates (Structural Engineers), Michael Popper Associates (Building Services Engineers) and Sound Space Design (Acoustician).

Major Project for Our Building Surveyors at Ladywell Convent – Fast Track and On Programme

Ladywell Convent in Godalming, Surrey, is the Mother House for the Franciscan Missionaries of the Divine Motherhood, a Roman Catholic female religious community, with convents, hospitals and missions worldwide

CMPB have worked for the FMDM's for many years, the first major project being for our Quantity Surveyors, when the community built a new Hospital in Gibraltar in the 1960's. We have helped look after, extend and alter the congregation's buildings in the UK since then and were very excited to be invited to assist them with a major development to their Mother House.

In 2005 our Building Surveyors were appointed to prepare a feasibility study for extensions and alterations at Ladywell, to provide additional nursing accommodation and additional residential accommodation for visiting sisters from overseas missions. Based on our original designs we were appointed to design and supervise the construction of a large extension to the Nursing wing, to provide 15 additional nursing bedrooms, 4 visitor's bedrooms, two self contained flats and associated communal and sanitary accommodation; and a detached annexe, providing 14 bedrooms and communal spaces for visiting sisters from overseas. At a total construction cost of about £4.5 million.



The 'La Verna' extension under construction

straightforward, as much of the existing convent is Grade II listed but with assistance from local planning consultants Vail Williams planning was achieved in March 2006 and work started on site on 3rd April 2006.

As we go to press the Visitor's Annexe is ahead of programme and is now 90% complete. The La Verna Nursing Wing is on programme for completion in March 2007.



The soon to be complete visitors annexe

This project by our Quantity Surveyors, our Project Managers and our Planning Supervisors. Other members of the design and construction team are: Structural Engineers - David Osborne Associates; M & E Consultants - Edward Pearce and Partners; and the main contractor is Lampard and Partners.

Our aim has been to produce good quality buildings, on time and for the right price; which blend in sympathetically with the existing Grade II listed Convent. We hope that when the construction works are complete and the site is returned to its normal peace and tranquillity that our Client will agree that we have achieved our aim.

CMPB Marinaded in Education

CM Parker Browne are proud to be one of the founding members of The British Council for School Environments (BCSE).

BCSE is a new membership organisation made up of local authorities, schools, construction companies, architects and others involved in, and concerned about, the design and build process in the education sector. It will act as a forum for exchange, dialogue and advocacy for anyone interested in learning environments; from educators to policy makers; users to designers; managers to constructors.

Why is there a need for the BCSE?

The United Kingdom is in the midst of the largest investment in school buildings since Victorian times. Through initiatives such as Building Schools for the Future (BSF), city academies and the primary school capital

programme, the government has allocated billions of pounds for the rebuilding and refurbishment of schools over the next 10-15 years. This unique moment in education history presents a momentous opportunity for everyone involved in both education and the construction and management of schools; the opportunity to design and deliver buildings that are capable of supporting and enabling the realisation of a new vision for education, for children's services and to support community cohesion.

This opportunity needs to be fully realised to ensure that this investment is maximised. It will take cooperation within interrelated industries and between differing organisations to an unprecedented scale.

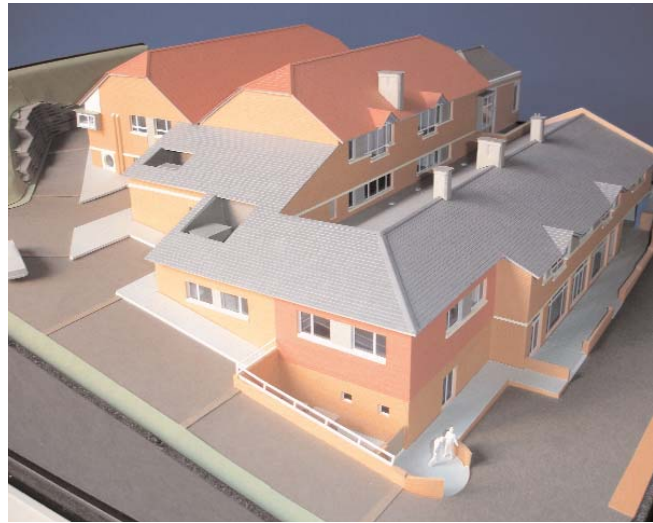
CMPB are currently working on 141 education projects across the country.

Caterham School – Science and Dining Hall Development

For the last 19 months CM Parker Browne has been working as Project Managers and Quantity Surveyors on behalf of the Governor's and Trustees of Caterham School on the prestigious new £4.5 million science facility.

Now nearing its completion, Caterham School are preparing themselves to occupy fully serviced suites of sciences laboratories in order to build on their fine academic reputation in Chemistry, Biology and Physics. Built within the steep chalk hillside that the campus of the school is formed around, the building comprises of four floors. Four laboratories, associated preparation and resource rooms are provided over three floors with the ground floor dedicated to provide the school with a contemporary refectory space, new kitchen and servery facility catering for the 1000 pupils and staff.

The project has not been without its difficulties. However, with a determined team taking ownership of the delivery of the building to its highest standard, we are very pleased that once again CM Parker Browne are to work as Project Managers and Quantity Surveyors with the school on its follow-on project, a new 6th Form Centre and Medical facility due for completion in the Summer 2008.



Architect's model of the proposed development

Our Building Surveyors help Thomas More School, Purley, gain Specialist Science College Status

On Thursday 23rd of November 2006 the newly refurbished science laboratories and the design and technology facilities at Thomas More School were opened by The Most Reverend Archbishop of Southwark Kevin McDonald.

Tony Luff and Robert Willson, from our BS team, were delighted to attend the event which marked the successful culmination of several phases of work they have managed for the school.

Our Building Surveyors were appointed by the School Governors in 2005 to provide design and budget cost information to support their bid to achieve specialist science college status.

The bid was successful and working with the school's heads of department, Robert and Tony developed a concise brief and prepared a detailed specification and drawings for the proposed refurbishment works. Competitive tenders were obtained and the approval of the DfES was secured prior to commencement of the works. The work on site was undertaken in several phases to accommodate the school timetable. During the tender period for the science refurbishment the school received additional funding to replace the heating system within the building.



The Most Reverend Archbishop of Southwark Kevin McDonald with pupils from the school

Our BS's were asked to take this on board and it was necessary to accelerate the heating programme to reduce its impact upon the refurbishment works. This hurdle was overcome and all works were completed on time, with the minimum of disruption to the running of the school.

The newly refurbished rooms provide four modern well equipped science laboratories, a food technology room with commercial catering facilities a design and technology workshop, with new machinery and a state of the art electronics workshop and cad design suite.

During our involvement with the school we have also undertaken fire precautions works within the main Grade 2 listed building and we are currently overseeing the phased replacement of the remaining heating system. Our services are being retained to undertake remedial repairs and replacement of the rainwater goods. This will require careful management as the works will be carried out while the school is in occupation.

CMPB are currently assisting Thomas More School in the feasibility of a number of new projects to further improve and enhance the school's facilities.

Wear it Pink Day!

The Guildford and London office took part in Breast Cancer campaigns 'wear it pink' day on Friday 27th October. The event was organised by Carley Jones our admin assistant in the Guildford office. The charity was important to Carley having cared for women with Breast Cancer during her time nursing.

Breast Cancer is the most common form of cancer and one woman in nine shall be affected by it during their lifetime in the UK. 'Wear it pink' day is Breast Cancer Campaign's biggest fundraising event during Breast Cancer Awareness month and has raised over £3.6 million since its launch in 2003 helping the charity continue researching a cure for breast cancer. For more information on the campaign visit www.wearitpink.co.uk.

It was a successful and fun day raising a significant sum for this deserving charity. Thank you to everyone who took part.



From right to left: Nick Inskip, Denis Ulyet, Lee Oversby, Luke Disley, John Holwill, Clive Sapsed, Carley Jones and Alison Ward looking lovely in pink!

A Winning Partnership – in miniature



You may have seen Miles and Lorna on 'Strictly Come Dancing' on 25th November, or even on 'Blue Peter' in October, where the BBC turned an entire edition of 'Blue Peter' into a childrens edition of 'Strictly Come Dancing'. CMPB are providing sponsorship for this young couple, to help them compete at the highest level nationally.



Miles is the youngest son of Mike Chapman, a senior surveyor based at the Guildford office. Although Miles started ballet at the age of five, it was only after watching the last series of 'Strictly Come Dancing', that Miles decided that he would like to try Latin American and Ballroom dancing. Lorna, from Reading, was chosen after auditions were held (boys are in demand!).

Their partnership was formed in April this year. In July they won their first Open Competition, and at the next, at Stockport, they won the All-England Juvenile Ballroom Championship. They currently lead the English Amateur Dance Association ranking tables. Most recently, Miles and Lorna competed in the British Nationals at Blackpool and have won a place in the British Team. Miles and Lorna have done brilliantly well in a little over six months, but competition at the highest level is fierce, and they are competing against children who are taught intensively. CMPB are pleased to assist them in their attempts to win the remaining three major championships.

The next major competition is 'Stars of Tomorrow' at Blackpool in January and we wish them well – watch this space!

London

61 Southwark Street,
London SE1 0HL
Tel: 020 7928 1066
Fax: 020 7928 1099
southwark@cmpb.co.uk

Chatham

Admirals Offices
The Historic Dockyard
Chatham
Kent ME4 4TZ
Tel: 01634 814714
Fax: 01634 815999
chatham@cmpb.co.uk

Colchester

The Red House
Great Horkesley
Colchester
Essex
CO6 4HA
Tel: 01206 273676
Fax: 01206 271537
j.cadman@cmpb.co.uk

Guildford

8/9 Faraday Road
Guildford
Surrey GU1 1EA
Tel: 01483 468666
Fax: 01483 468668
guildford@cmpb.co.uk

Liverpool

Suite 115-119, 1st Floor
India Building
Water Street
Liverpool L2 0RA
Tel: 0151 227 9151
Fax: 0151 236 6186
liverpool@cmpb.co.uk

Manchester

Turing House
Manchester Technopark
Birley Fields
Manchester M15 5RL
Tel: 0161 227 0610
Fax: 0161 232 1801
manchester@cmpb.co.uk

Helium Soul Rock Guildford

Our resident rock star/project manager Russell Blaber and his band Helium Soul performed their annual hometown gig at the Farnham Maltings back in September.



Understanding the importance of their local fans the boys did not disappoint with the gig featuring full pyrotechnics and even some guitar juggling! This year saw 280 people pile in to see the band which has appeared on Radio 2, Xfm, Steve Lamacq's BBC6 Sunday Show as well as numerous stations across Europe. The band has a growing fan base including a faithful group of CMPB staff and BBC Rock Show host Bruce Dickenson. It is fair to say the band are on their way up, with negotiations underway for another album deal following the successful release of their debut album 'Mass of Four'.



Russell Blaber with fellow band members.

Tour dates are currently being put together for 2007.

For more information on the band and to listen to some live tracks visit www.heliumsoul.com

www.cmpb.co.uk