

Welcome to the Spring Issue of the Synergy Newsletter

It has been just over a year since Synergy Construction & Property Consultants LLP was formed by the merger of CM Parker Browne, Cook & Butler and Andrew Turner and Company. The first year of trading has seen a favourable reaction from clients to the merger and turnover has increased to £9.1 million.

The formation of Synergy has created considerable interest from similar firms looking to consolidate and join in the benefits of a larger company. Seven practices have approached us over the year and four - Bare, Leaning & Bare, Johnson & Partners, Ottley Morrison and Safety Solutions have joined Synergy. Negotiations continue with two more. The group now has 140 staff and a projected turnover of £12 million.

The mergers have strengthened our presence in the North through Ottley Morrison, a QS and project management practice in Central Manchester and increased the geographical spread of our Building Surveyors through Johnson & Partners, a Hemel Hempstead based practice of Building Surveyors and Architects. Synergy now has an Architect Partner, which adds significant strength and depth to our existing design capacity. We have broadened our expertise in historic buildings, through Bare, Leaning & Bare, one of the country's leading Historic Building QS firms in their field who have offices in Bath and Exeter. Our merger with Safety Solutions, a Dartford based firm has increased our capacity on health and safety and we can now offer the provision of health & safety training, not just to the construction industry but across all sectors. With legislation being tighter than ever and corporate responsibility hitting the headlines weekly, we can advise businesses on the need to protect themselves by having health and safety training and risk and disaster management in place.

Synergy Construction & Property Consultants LLP now has ten offices across the UK and can offer Clients a comprehensive service in all aspects of planning, managing and implementing the design and construction of buildings and sport surfaces.

These are exciting times for us and we thank all our existing clients for their ongoing patronage. We hope you continue to enjoy the benefits of our growing business, which now can offer even greater resources but remains very personal.

Graham Harvey Browne, Managing Partner



Graham Harvey-Browne with Geoff Evans of Bare, Leaning & Bare



Nick Inskip, Partner and Head of Building Surveying with Anthony Parisi of Johnson & Partners



Graham Harvey-Browne with Raj Lakha of Safety Solutions

Raj Lakha Appointed as President (International) of IISSM

Raj Lakha, Partner of Synergy CPC LLP and Safety Solutions UK, was recently elected as President (International) of the South East Asia based International Institute of Safety and Security Management (IISSM).

Working in partnership with RRC Training, a wide range of Safety Qualifications can now be studied in South East Asia via Web or Distance Learning. This facility adds to the range and type of qualifications that Safety Solutions can now provide on a worldwide basis. City and Guilds NVQ 3 and 4 add flexibility to the range of distance programmes that can now be offered by the group, to achieve IOSH membership status at Tech IOSH, Grad IOSH and Chartered Member level.

Raj has also been involved in a further development through Blake College London and South Africa, who are liaising with Safety Solutions to run a summer series of 'vocation courses' in health and safety during August and July 2008. Candidates will have an intensive study programme incorporating three block courses: NEBOSH International, Construction and Fire and Risk Management qualifications.

ISBA Headline Sponsors

We are delighted to announce that this year CM Parker Browne are headline sponsors of the ISBA (Independent Schools Bursar's Association) Conference 2008.

This year will mark our 9th year exhibiting at ISBA. The ISBA annual conference is a very important date in the calendar for us, as we currently work with 71 Independent Schools across the UK. The ISBA conference allows us to catch up with Clients past and present and keeps us up to date with what is going on and the issues Bursar's are facing in this dynamic sector.

If you are attending the Bursar's conference this year, please do visit us on stand 59.



The Team

Executive Chairman

G P Harvey-Browne BSc FRICS

Managing Partner

S P Worthy MRICS

Finance Partner

Anne-Marie Woodhouse

Partners

M Strachan FRICS
J A Barton FRICS
G F Oliver FRICS
G L Evans MRICS FCIQB FASI
A J Parisi FRICS
M A Connolly MRICS
D B Ulyet BSc MRICS
N D W Inskip
A P Turner BSc FRICS
R N Buckley BSc MRICS
R J Ebdon BSc FRSA MAPM ICIOB
R Lakha BA MBA FISM CMIOSH
P C Baker BA BArch RIBA
A J Stenning BSc FRICS
R E James BSc MRICS
P J Hammond MRICS
S J Jopson BSc
S P Strachan BSc
J A Cook BSc MRICS
A P Luff
S D Hawkes BSc MRICS
D J Hawtin ACIOB
P L Grinham MSc ACIOB
P Davies MA MBA MCIQB MAPM
W W B Khoo BSc MRICS
N Walters BSc MRICS
R Brooker
P Campos BSc MBA MRICS
K Morrison MRICS
D J Ball BSc MRICS
D Stow CFIOSH FIIRSM MCIPD
T Clark BSc Cert Ed MCOT AIEEMA

Associate Partners

M J Stevens MRICS
M T Pinker FRICS
W A Goodinson

Associates

K J Grover MRICS
A J Watson MRICS
R A Crimes MRICS
J A Lyster
M J Hare BSc
J B Layfield BSc MSc MRICS
I J Walker BSc Dipl Bldg Cons (RICS) MRICS
M K Major Tech RICS
M Chapman
R Willson BSc MRICS
D Gleeson BSc
A Avis CMIOSH
B M McManus ACIOB FFB

Consultants

T W Kendall FRICS
J F Cadman DLC MILAM
D C Williams FRICS
B W Proctor



Bare, Leaning & Bare – our Experts in Historic Buildings

Bare, Leaning & Bare is one of the leading historic building consultancy firms in the country. The Practice have an impressive portfolio of Cathedrals and Churches across the country, from Canterbury in Kent to St David's in Wales, from Truro in Cornwall to Doncaster Minster in the north.

Bare, Leaning & Bare work on many Cathedrals, including St Paul's, Truro, St David's, Lichfield, Winchester and work on Canterbury's ten year plan has just been completed. Bare, Leaning & Bare also work with Westminster Abbey and have also recently been successful in securing Westminster Cathedral as a Client, when the QS appointment came up recently for renewal. We are pleased to be working alongside fellow Synergy members, Cook & Butler on the project. Other recent ecclesiastical projects include the 2007 RICS award winning work at St Paul's in Bristol, where the working environment was somewhat in contrast to it's namesake in London.

Bare, Leaning & Bare is also heavily involved with the Landmark Trust, who are currently completing the much publicised Clavell Tower project, where the Tower has been moved some 25 metres away from the cliff edge. BLB are acting as Project Manager, Contract Administrator and Quantity Surveyors on the project. The Tower was in a serious state of disrepair and if not moved would have disappeared entirely into the sea in a relatively short period of time. The Tower sits within the National Park that is the Jurassic coastline of Dorset, within a SSSI and next to a Scheduled Ancient Monument.

The project came under heavy English Heritage scrutiny and the works have involved the individual recording and marking of every stone and brick remnant to ensure it was rebuilt exactly as it was. The project is largely funded by Heritage Lottery Fund monies but such funding is strictly limited and the exceptionally adverse weather and working restrictions of the site have caused considerable difficulties. Despite this, the project is set to come in on budget.



Just one of London's 'Big Three' cathedrals of which BLB work on



Clavell Tower, top, before relocation and bottom, under reconstruction

Services

Quantity Surveying

- Bills of Quantities
- Claims Consultancy
- Construction Cost Consultancy
- Cost Estimating
- Cost Management/Control
- Expert Witness Work
- Fire Insurance Assessment & Valuations
- Insurance Loss Adjustment & Claims
- Life Cycle Costing
- Project Feasibility Reports
- Quality Assurance
- Risk Management
- Taxation Advice
- on construction properties
- Urban Regeneration
- Value Engineering
- Value Management

Building Surveying

- Advice to Landlords
- Building Maintenance & Repair Specification
- Building Refurbishment
- Building Technical Audit
- Completion & Handover Management
- Condition Surveys
- Contract Administration
- Cost Estimating
- Cost Management/Control
- Design for New Buildings, Alterations & Extensions
- Detail Design
- Disability Discrimination Act
- Surveys on Buildings
- Employer's Agent
- Fire Protection & Detection
- Party Wall Surveying
- Planned Maintenance Management
- Project Feasibility Reports
- Quality Assurance
- Schedules of Dilapidation

Project Management

- Alternative Dispute Resolution
- Brief & feasibility documents
- Claims Consultancy
- Completion & Handover Management
- Construction Procurement/Management
- Construction Programmes
- Contract Administration
- Design Management
- Employer's Agent
- Monitoring of Construction Progress
- Office Relocation Management
- Planned Maintenance Management
- Project Execution Plans
- Project Feasibility Reports
- Quality Assurance
- Risk Management
- Urban Regeneration

CDM Co-ordination

- Assessment of Contractor H&S Competency
- Assessment of Designer H&S Competency
- CDM Co-ordinator services
- Health & safety advice on buildings
- Health & safety advice on construction projects
- Health & Safety Audits of sites
- Health & Safety Training

Architecture

- Chartered Architects
- Full or partial Architects services
- New building design and planning
- Development appraisals
- Refurbishments, alterations, extensions
- Changes of use
- Commercial, educational & residential projects
- Architects services to property developers
- Applications for Planning permission
- Planning consultancy and appeals
- Listed buildings
- Working drawings for construction and building regulations
- Contract administration
- Contractors design & partnering projects
- Landscapes & Interiors
- Sustainability and design and access statements

Great Chishill Invest in Retaining the Younger Generation

Eleven new houses in Great Chishill, were officially opened by Andrew Lansley CBE, MP for South Cambridgeshire on Friday 18th April.

For many months, Great Chishill Parish Council had been seeking a site which could be dedicated for housing local families. Chairman of the Parish Council, John Murgatroyd, was determined to act to stop the exodus of young people from the village. Local landowner Bayer Cropscience offered an unused former plum orchard, on the basis that the new dwellings would be affordably rented, not sold.

Johnson & Partners were appointed by developers, Raglan Housing Association, as the architects and saw the project through to completion, alongside D&B contractors, MacCann Homes.

The design of the scheme included retaining a belt of trees and hedgerow, both as a buffer zone to reduce the visual impact of the new buildings and to provide a wildlife habitat. All car parking was hidden from view behind the houses. Various ecological mitigation measures were included in the scheme, providing breeding and feeding sites for birds, bats and invertebrates.

The dwellings are of timber frame construction and are heated by LPG fuel, which is stored in communal underground tanks. The contract included a further ten dwellings in the nearby village of Meldreth. Here an innovative timber clad crescent design, responds to the context where two large beech trees are retained as the focal point at a bend in the road.

Many negotiations and hurdles had to be overcome to see the development through to completion, in particular achieving planning permission in a rural area but the results have been fantastic.

Learning Life Skills in Sutton

Cook & Butler are pleased to have been appointed as Quantity Surveyor for an exciting and unusual new build project named Sutton Life Centre. This is under our framework agreement with London Borough of Sutton.

The facilities to be provided in the new building, include a lending library and youth and meeting rooms, for use by the local community. The main focus is the provision of a safety centre facility, to provide safety and life skills to people of all ages, but with particular focus on children. This will be provided by sub-dividing a large double height space into different scenarios, including a street scene and a transport zone; part with physical scenery and part by means of computer animated images projected onto the walls, ceilings and floors, allowing for an unlimited range of virtual reality scenarios to be created. Externally a multi-use games area will be provided.

The building is estimated to cost approximately £4 million, construction is due to commence later this year, with the Centre opening in early 2010.

The project is being procured under a PPC 2003 contract and other members within the partnering team include Curl la Tourelle Architects, Elliott Wood (structural engineers), Halcrow (mechanical and electrical consultants), Land Design Studio (scenery and software design) and Mansell (main contractor).



The completed housing in Chishill



£7.5m Investment in sports resources pays off at Moulton

As the only college in the country to receive the prestigious, Beacon College status by the RFU, Moulton College, Northampton, is reaping the rewards for its £7.5m investment in sports resources since 2000.



Hockey training on the pitch at Moulton

Moulton's facilities have not only been included on the official list of Olympic training venues but are also regularly used by a number of professional rugby and football clubs; it's easy to understand why a further £8.5m phase of development is planned to start later this year.

With the requirement for such high standards of physical performance, comes the expectation of equally high quality playing surfaces. This is where John Cadman Associates, a member of Synergy Construction & Property Consultants has played a key role, offering first-hand experience of designing, specifying and advising on the installation of over 100 sports surfaces, from running tracks to cricket pitches.

John says: "Prior to entering the artificial surfaces business, I spent 15 years coaching hockey at club and national level, so I come from a user angle rather than a scientific standpoint. I spent many years coaching on synthetic grass and understand exactly the type of performance that is required."

All surfaces are built to an individual performance specification. At Moulton we have advised on three such surfaces. The first, a 3G sand and rubber infill synthetic grass soccer pitch, demonstrates the latest developments in synthetic grass surfaces. It has a 55mm pile height into which is placed a layer of sand, overlaid by a rubber crumb infill, a surface has been created which is much more suitable for soccer and rugby, where players are

coming aggressively into contact with the surface when they execute certain movements.

The second project, a sand-filled synthetic pitch for hockey and multi games use, was built to the FIH Performance Specification. Also included in this project was a large six court tennis and netball area with black top macadam, which complies with the Netball Performance specification. By way of comparison to the third generation pitch, the sand filled carpet, 23-25mm pile height is infilled with sand to within 2 to 3mm of the top of the pile.

A water based pitch for the College is currently at tender report stage. Such a pitch has no infill and has a much denser pile carpet. The use of water makes the impact with the player completely friction free and provides good ball run.

Speaking about the project, John Cadman said: "If you consider that the levels on a hockey pitch when measured with a 3m straight edge must have no greater than a 6mm deviation – it is very exacting work."

The College recruits internationally to its sports programmes. Gerald Davies, assistant principal resources, firmly believes that high quality sport facilities not only benefits recruitment to all college courses but also enhances Moulton's credibility with both amateur and professional sports clubs, which is why obtaining good technical advice is so important.

He said: "The quality of advice from John has been excellent. Not only have all the pitches proved to be technically very good but his advice on the type of surface to install has both provided excellent resources for our students, as well as attracting commercial clients to use them."

Philippine Embassy - Change of Address!

On the 20th January, 2008, CM Parker Browne we were pleased to attend the official inauguration of the recently completed refurbishment of the new Embassy of the Philippines at 6 – 11 Suffolk St, London. Following a challenging £1.8million repair and refurbishment programme, the opening of consular services at the Suffolk Street buildings was the culmination of 3 years of CM Parker Browne's involvement with these premises.

A number of feasibility studies for appropriate uses were considered for the listed Grade 2* terrace buildings that once formed part of the impressive John Nash terrace that stretched from Pall Mall to Regents Park in the early 1800's. We were delighted to work with Ambassador Edgardo Espiritu and his close colleagues, providing project management and cost control services for the refurbishment and alteration project, turning these un-used buildings into secure, modern office and consular spaces for the continued growth and development of the Embassy.

Success of the project was marked with the official visit for the opening of the Philippine Secretary for Foreign Affairs, Mr Alberto Romulo.



RICS Conservation Forum Appointment

It has recently been announced that Adrian Stenning, Partner of Synergy Construction & Property Consultants and Bare, Leaning & Bare, will be succeeding Henry Russell as Chairman of the RICS Conservation Forum.

Adrian has been an active Board member for some time and helped in the setting up of the Conservation Summer School with Marianne Suhr. The Summer School is running again this year in September. The course is primarily aimed at undergraduates and those newly graduated but there are opportunities for others to attend on the lecture days. It provides a very good grounding in the basics of traditional building techniques and conservation and repair. He has also assisted in the writing of the Conservation Guidance Note which it is hoped will be published this Summer. As Chairman, Adrian will be aiming to increase the activities the Forum runs and the influence it exerts.

For further information on the Conservation Summer School or the Conservation Forum, please visit: www.RICS.org

Synergy and Open Partnership, Working Together

Synergy are branching out into a new specialist arena having formed a close alliance with Open Partnership.

Open Partnership is a specialist Loss Adjusting and Claims Consultancy Practice which operates both in the UK and Internationally. Open focuses on major property, engineering and energy sectors and works for many major Insurers and Brokers.

Open and Synergy see very clear areas of shared business interests and given the types of loss which Open seeks to attract, there is a need for construction consultancy support in helping to quantify major building and structural losses.

Whilst Open works 'Insurer' side rather than 'Insured' side of the market, there is a significant area in between which is the Major Account or

Designs on Oakham School

CM Parker Browne were appointed as Project Manager's, Quantity Surveyor's and CDM-C's to Oakham School in 2006 for the construction of their new Art and Design Building. It will be home to a CAD/CAM and electronics facility, materials workshop, technology studio, preparation rooms, IT and admin offices.

The building, designed by Project Orange Architect's will be a 2 storey, cedar shingle clad design and will make an impressive statement, as it is surrounded on all sides by more traditional types of construction.

The site itself is incredibly tight with the building being no more than a couple of metres from some of the surrounding buildings. Overcoming the problems of a difficult site has been made easier by the attentions of the contractor (RG Carter) and the close co-operation with the design team.

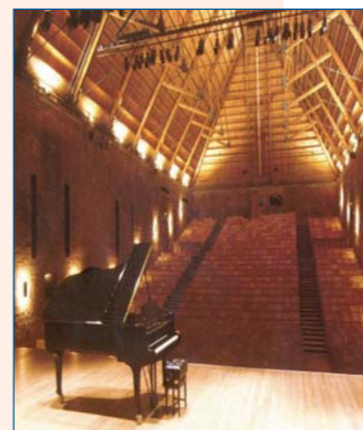
The £1.2 million scheme which commenced in September 2007 is due to complete in June 2008. The image below shows the installation of the laminated timber beams in February 2008.

CM Parker Browne is pleased to be working with Project Orange Architect's, Smithers Purslow Consulting Engineers and RG Carter Peterborough Limited.



Performing Arts heads into the future at Sevenoaks School

Sevenoaks School, founded in the 15th century, is now one of the most successful co-educational independent schools in the country. CM Parker Browne are very proud to be working as project managers, overseeing the school's new Performing Arts Centre project, which, at the time of going to press is being tendered by contractors and is on target to be started on-site, early July 2008.



A representation of the interior of the proposed auditorium

As a result of the academic success and popularity, the school has grown in numbers in recent decades, from 300 to 990 students. In 2005 the school outlined a development brief, setting out its priorities. Working with Tim Ronalds Architects, a Masterplan for the school's development was created. The Masterplan offered a map for the development of the school buildings and site, which provides for all departments to progressively have new and improved facilities. Performing arts was one of the key areas of need identified in the Masterplan and the Sevenoaks School Foundation concluded that a new Performing Arts Centre should be the first priority for the school.

This very exciting building embodies sustainable principles and the design team is committed to achieving the school's desire for a sustainable development. Performing arts buildings pose unusual problems in terms of sustainable design. Sound proofing considerations necessitate heavy and sealed constructions which involve more materials. Auditoria are enclosed spaces which can require mechanical ventilation and cooling in summer, which consume more energy.

The key sustainable features of the new Performing Arts Centre encompass a building insulated and sealed to exceed minimum building regulations standards. Features include rooms that are predominantly well daylight and naturally ventilated, natural ventilation to the auditorium, high thermal mass, effective solar shading and night-time ventilation, to ensure comfort in the summer without the need for active cooling, artificial lighting by high efficiency discharge lamps, automatic control of lighting by presence and light detection where appropriate, the use of groundwater to provide low-carbon cooling to the performing spaces and solar thermal hot water heating. The building is designed to operate as passively as possible, minimising noisy building services installations and the use of alternatives to Portland cement based concrete in the structure.

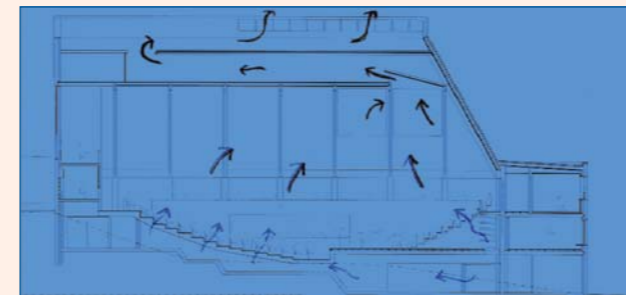


Diagram demonstrating natural ventilation to the auditorium

The Performing Arts Centre will comprise of 4 floors of accommodation, totalling a gross internal floor area of 2730 m2. A main performance hall, primarily designed as a concert hall is also able to stage drama and dance, will be capable of holding an audience of up to 450 with an orchestra or choir and will hold 500 for school assemblies. The building will have a recital room which will seat up to 100, with a chamber group also used for choir and ensemble rehearsals. Classrooms for drama and music, specialist music teaching classrooms, ensemble teaching rooms and smaller music teaching/practice rooms.

Once completed in December 2009, this building will bolster the already exemplary academic standards achieved at Sevenoaks School.

St Margaret's Church, Angmering

The church family of St Margaret's, a Grade II* listed church located right in the heart of the pretty Sussex village of Angmering, received an early and most welcome present last Christmas – a sealed copy of the faculty from the Chancellor of Chichester, granting them the right to start a major programme of works in the New Year, designed by Canterbury based architects, Lee Evans Partnership. CM Parker Browne were appointed as Quantity surveyors and work is being undertaken from our Guildford office.

St Margaret's is of some historic interest. Believed to have been built between 1180 and 1220, a tower and some medieval arches are all that remain of the original church which was then substantially developed during the fifteenth century. During the 1850's it was recorded and extended by the distinguished Victorian architect Samuel Sanders Tuelon.

The architects design creates a building that acts as an inviting beacon for the local community. In what might seem a radical move, the entrance has been relocated to the eastern façade of the church in one of two gabled extensions. These two new extensions are in fact inspired by Tuelon's original design, which projected a three-gabled rear elevation to the approaching or observing bystander.

The Project went on site in January and the work is now underway. CM Parker Browne are very pleased to be involved in this fantastic project for the church.

Change of perspective at Cranleigh School

CM Parker Browne were appointed as Quantity Surveyors to Cranleigh School in June 2006 in connection with their proposed £7.1 million Academic Centre in the heart of the senior school comprising twelve lower school, and three sixth form laboratories with associated preparation rooms, eight language classrooms and a language laboratory, a IT suite and a lecture theatre .

The project team successfully obtained planning consent in October 2006. Following this, the Governing Body of Cranleigh School appointed R. Durnell & Sons Ltd as the main contractor to commence the construction of this exciting and innovative major development.

The works commenced in August 2007 with the demolition of the Physics building, with an anticipated date of completion of Oct '08.

CMPB deliver at Tonbridge School

Tonbridge School appointed CM Parker Browne in 2005 to help develop their design concept, co-ordinate the architect selection process and project manage the construction phase of a brand new £11.2 million sports and media centre.

Tonbridge, one of the UK's premier league independent boys' schools, has long been associated with sporting excellence and the school was clear that the new centre should make a powerful statement about its overall values, combining academic excellence with cultural awareness and prowess in sport. The architects, Limbrick Limited, designed the building to engender a sense of community; to make it the hub for Tonbridge sport and be a magnet for parents and boys, a place to gather and socialise. The brief therefore included provision for a media centre and social area.

R. Durnell's and Sons began work on the 15-month construction programme in January 2007 and practical completion was achieved on time on 31st March, 2008.

The principal facilities include:
• Media Suite, comprising a control room, edit suite and studio
• 5-court sports hall, suitable for badminton, basketball, hockey and football as well as 5 lanes of indoor cricket nets
• A challenging climbing wall, that includes overhangs and natural features
• 25metre 6-lane swimming pool, with depths varying from 1.2m to 3.0m

St Josephs Belmont

The new Centre of Excellence at St Josephs RC Primary School in Harrow was opened on 3rd April 2008.

The building comprises a multi-purpose teaching and assembly space, entrance foyer and reception, plus four classrooms on two storeys and a number of ancillary rooms which enable the facility to operate outside school hours. The centre offers inclusive educational opportunities for all ages, including pre-school groups, after school clubs and adult learning.

The head teacher, Mr Phil Sutton and his governing body had been inspirational in their brief for the Centre – an educational and architectural landmark to encourage creative teaching and to be an instantly recognisable place for people to interact with the school. The main feature is a coloured curvilinear wall on the street frontage which serves as a buffer to traffic noise but also gives the required visual and physical impact on the street scene, welcoming people to enter within.

Colourful, well lit and lively-shaped interior spaces are designed to provide classroom identity and inspire imaginative learning. External areas and circulation spaces between the Centre and the main school provide sheltered places for external play with natural surveillance and secure entry.

The architects were Johnson and Partners and the Quantity Surveyors were Cook and Butler, both members of Synergy CPC LLP. This is one of many projects completed or in progress for schools within the RC Diocese of Westminster. The contractors were Westfield Construction.



A bird's eye view of the new Academic Centre at Cranleigh School

The project was procured under a JCT Standard Building Contract with Quantities. The design team comprises Pringle Richards Sharratt (Architects), Thomasons (Structural Engineers), Mecserve (Services Engineers), and Casson Associates (CDM Co-ordinator).

- Multi-purpose studio, suitable for martial arts, fencing and fitness classes or for functions as it is supported by a kitchen area
- A Fitness Suite offering a combination of aerobic and resistance equipment, together with free weights
- 8 group changing areas, together with separate pool and staff changing areas
- Café and terrace area, overlooking the athletics track and sports pitches
- A Bar with fantastic views to the surrounding fields
- Classroom adjacent to the Athletics Track
- Offices for administration, pool, athletics and fitness assessments, as well as a first aid room



from concept to completion



At practical completion, Tonbridge School's Bursar, Ray Hart, OBE JP, expressed his thanks to CMPB and the Project Team for all their hard work and for delivering a facility, of which the school will be extremely proud. In a recommendation to another independent school bursar, Ray Hart said:

"I cannot speak too highly of Robert Ebdon and the service he and his staff have given the school. I took over an excellent £11m project on Monday, exactly on time (to the day!) and, as far as one will ever know awaiting the final account, on budget: what more needs to be said?"

we really do deliver!



Synergy group
Andrew Turner & Company
Bare, Leaning & Bare
CM Parker Browne
Cook and Butler
John Cadman Associates
Johnson & Partners
Ottley Morrison
Safety Solutions UK

Sectors

Commercial
Ecclesiastical
Education
Healthcare
Historic Buildings & Conservation
Hotels
Residential
Retail
Sports & Leisure
Sports Surfaces

Services

Quantity Surveyors
Building Surveyors
Project Managers
CDM Co-ordinators
Health & Safety Trainers
Architects

thebackpage

Tribute to Theodore Williams MBE

Just as Bare, Leaning & Bare joined forces with Synergy, it was learnt that Theodore (Theo) Williams MBE, a former Partner of the Practice had died.

Theo joined the practice in 1942 and was charged with jointly founding the Bath office in about 1950 at the tender age of 25. Theo became highly influential in the Partnership at times some 70 strong, in the 60's & early 70's and was instrumental in developing and establishing Bare, Leaning & Bare as a respected conservation based Practice before retiring in the mid 90's.

He was deeply involved in many important projects throughout the years. A great friend of Sir John Smith, he became a valuable trustee of the Landmark Trust. Theo was also a trustee of the Bath Preservation Trust and was instrumental in the repair and creative reuse of Beckford's Tower – the 'jewel' above Bath. He worked with many illustrious architects, including Martin Stancliffe, with whom he played an important part in organising the major repairs at St Paul's in London.

His funeral was held at Bath Abbey, where again his involvement had been much appreciated. The award of his MBE for services to Landmark is testimony to the respect he had achieved throughout the building and conservation world.



A full tribute to Theodore Williams will appear in the September issue of the RICS Building Conservation Journal

Top Marks for Synergy Students

We would like to congratulate Michelle Morris and Gill Macquarie on their outstanding academic achievements.

Michelle, a building surveyor in our Guildford office received the Gordon White Student of the Year 2007 Award, for achieving a 2:1 BSc(Hons) degree in Construction. During her degree Michelle became pregnant but managed to juggle her studies and maternity leave in a way that allowed her to submit her dissertation and course work in advance of the deadline. Here we raise a glass to Synergy's very own super mum!

Gill, a project manager in our London office excelled in her studies, gaining a distinction in her Masters degree in Construction Project Management from the London South Bank University, despite an exceptionally hectic work schedule (see article on Tonbridge!).



Nick Inskip, Synergy Partner with his golf buddy on the morning of the National Final of St Andrews Foursomes Competition

Smiling in the face of adversity...

...a quality often found essential by our Building Surveyors! Leading by example, Nick Inskip, one of our Partners in the Guildford office, pictured above with his golfing partner on the Old Course at St Andrews, in April this year.

The stage was set for the finals of a charity St Andrew's Foursomes competition. Nick, together with other competitors from clubs around the country had travelled up to 'the home of golf' to compete for the Trophy. This picture was taken after breakfast and before they battled through snow, hail, sleet and 35 mph winds! On seeing the greens covered with snow, Nick sought advice from the starter on how they could putt on snow covered greens? The helpful response - "you'll just have to hit it a wee bit harder!"

A well contested whisky tasting ensued...



Our star students
Gill Macquarie
and
Michelle Morris



Offices

London

61 Southwark Street,
London SE1 0HL
Tel: 020 7928 1066
Fax: 020 7928 1099
london@synergyLLP.com

Guildford (Reg. Office)

8/9 Faraday Road
Guildford Surrey GU1 1EA
Tel: 01483 468666
Fax: 01483 468668
guildford@synergyLLP.com

Bath

2 Bath Street
Bath BA1 1SA
Tel: 01225 461704
Fax: 01225 447650
Email: bath@synergyLLP.com

Hemel Hempstead

39A High Street
Hemel Hempstead Herts HP1 3AA
Tel: 01442 212755
Fax: 01442 212759
Email: hemel@synergyLLP.com

Dartford

Regus House
Victory Way Admirals Park
Crossways Dartford Kent DA2 6QD
Tel: 01322 303112
Fax: 01322 303197
Email: dartford@synergyLLP.com

Manchester

Alberton House, 1st Floor
St Mary's Parsonage
Manchester M3 2WJ
Tel: 0161 2145230
Fax: 0161 8392125
manchester@synergyLLP.com

Harefield

9 Park Place
Newdigate Road
Harefield Middlesex UB9 6EJ
Tel: 01895 822577
Fax: 01895 823690
harefield@synergyLLP.com

Exeter

9 Heavitree Road
Exeter EX1 2LE
Tel: 01392 272245
Fax: 01392 412089
Email: exeter@synergyLLP.com

Chatham

Admirals Offices
The Historic Dockyard
Chatham Kent ME4 4TZ
Tel: 01634 814714
Fax: 01634 815999
chatham@synergyLLP.com

Colchester

The Red House
Great Horkeley
Colchester Essex CO6 4HA
Tel: 01206 273676
Fax: 01206 271537
j.cadman@synergyLLP.com